



IPSE Credential Guidance & Other FCIHE Resources

KATHLEEN BECHT, PHD

University Of Central Florida

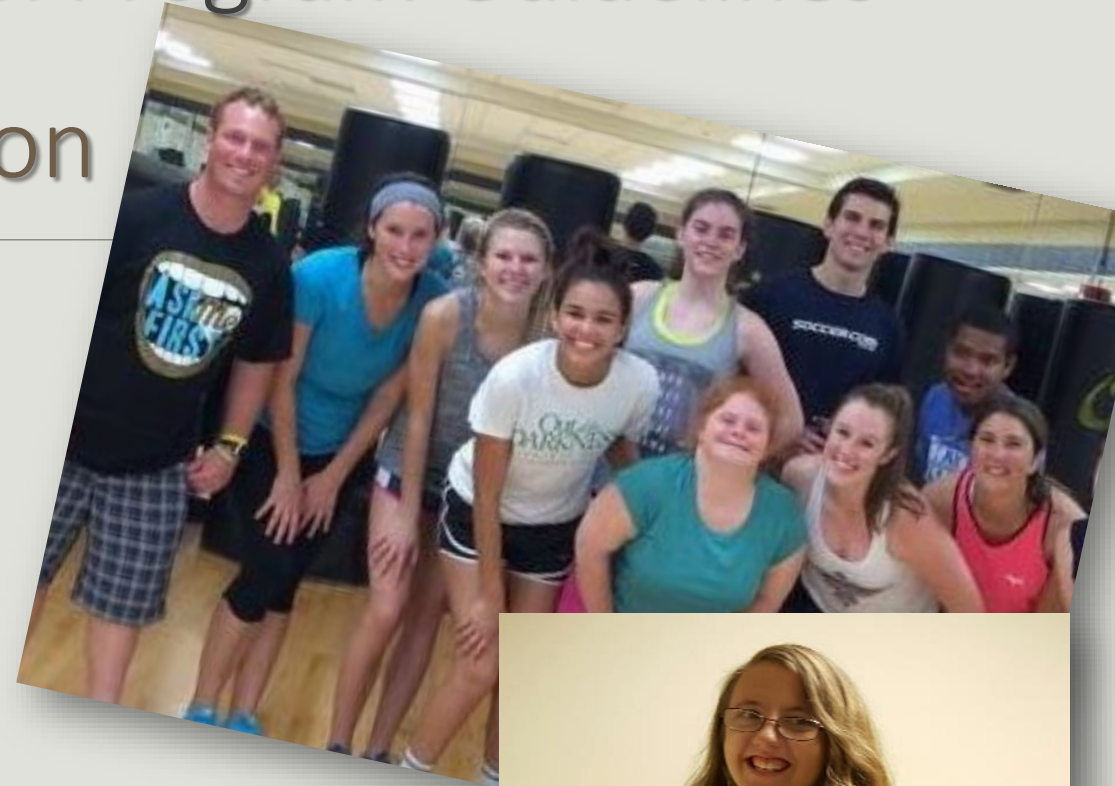
Director, Florida Consortium On Inclusive Higher Education



HEOA: Comprehensive Transition Program Guidelines

Inclusive Postsecondary Education

- ❑ *serve students with intellectual disabilities*
- ❑ *academic and social inclusion with individual supports and services*
- ❑ *person-centered-planning (PCP)*
- ❑ *meaningful credentials*
- ❑ *gainful employment*





Core FCIHE Technical Assistance 2015-2020

Mission: Expand and enhance inclusive postsecondary education (IPSE) programs

Technical Assistance & Site visits

Funding Participant Travel Support

Hartwick Symposium - February 2020

Website www.FCIHE.com



Credential Types

Certificate of Completion

Credential for College and Career Readiness

Industry Credential

Continuing Education Credential

College Employment Credential



Florida IPSE Credential Guidance Brief Series

1 Background on Inclusive Postsecondary Education

2 Programs of Study

3 Exploring Existing Credentials

4 Partnerships toward Credential Development

5 FCIHE Credential Action Planning Tool

6 Credentialing Resources



Credential Guidance Brief Series #2 Programs of Study

1. Liberal Arts
2. Career & Technical Education
3. Transitional



Credential Guidance Brief Series

#2 Programs of Study

Descriptive Elements

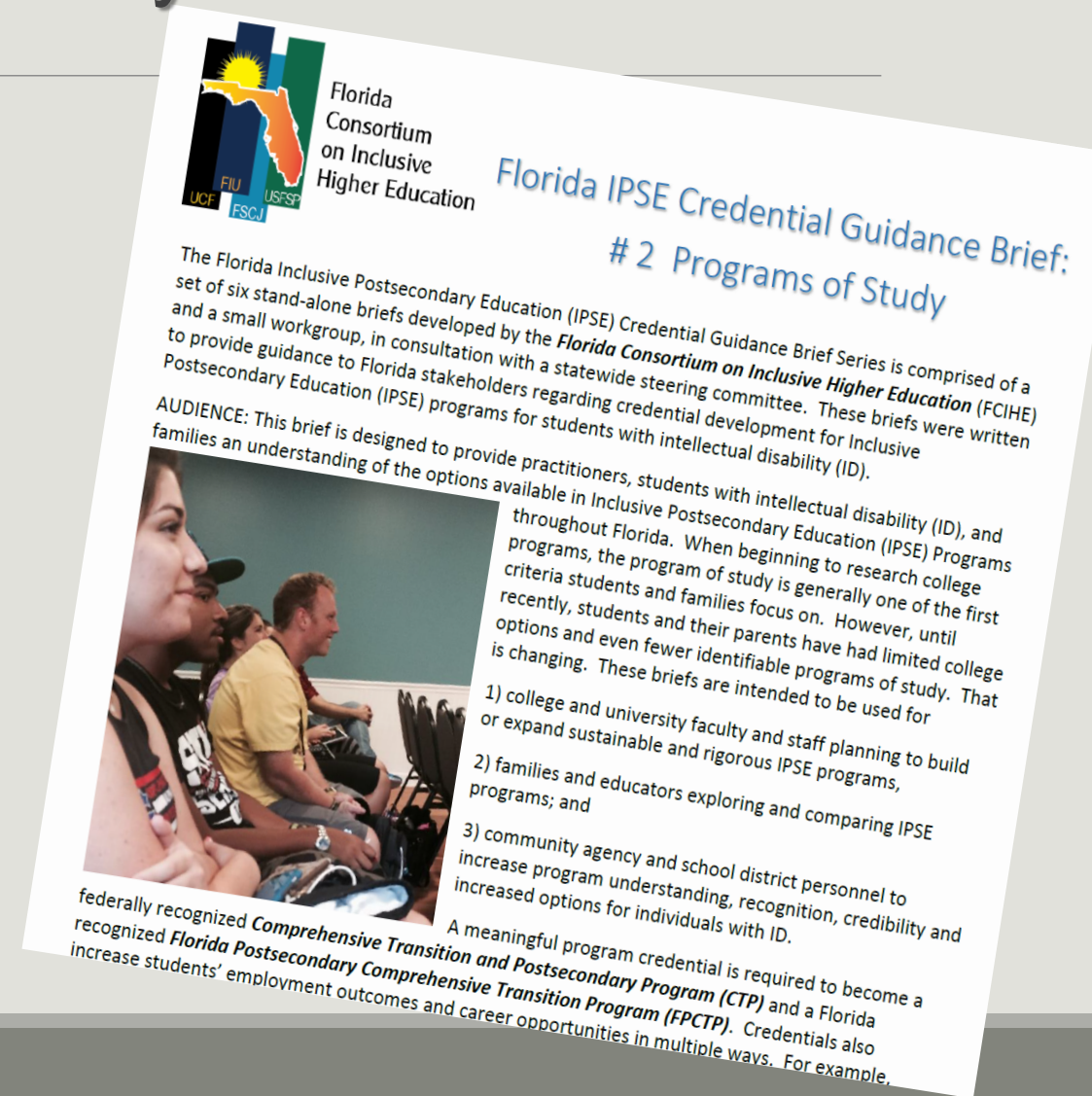
Summary Program Overview

Eligibility

SAP

Advising Structure

Program of Study Components

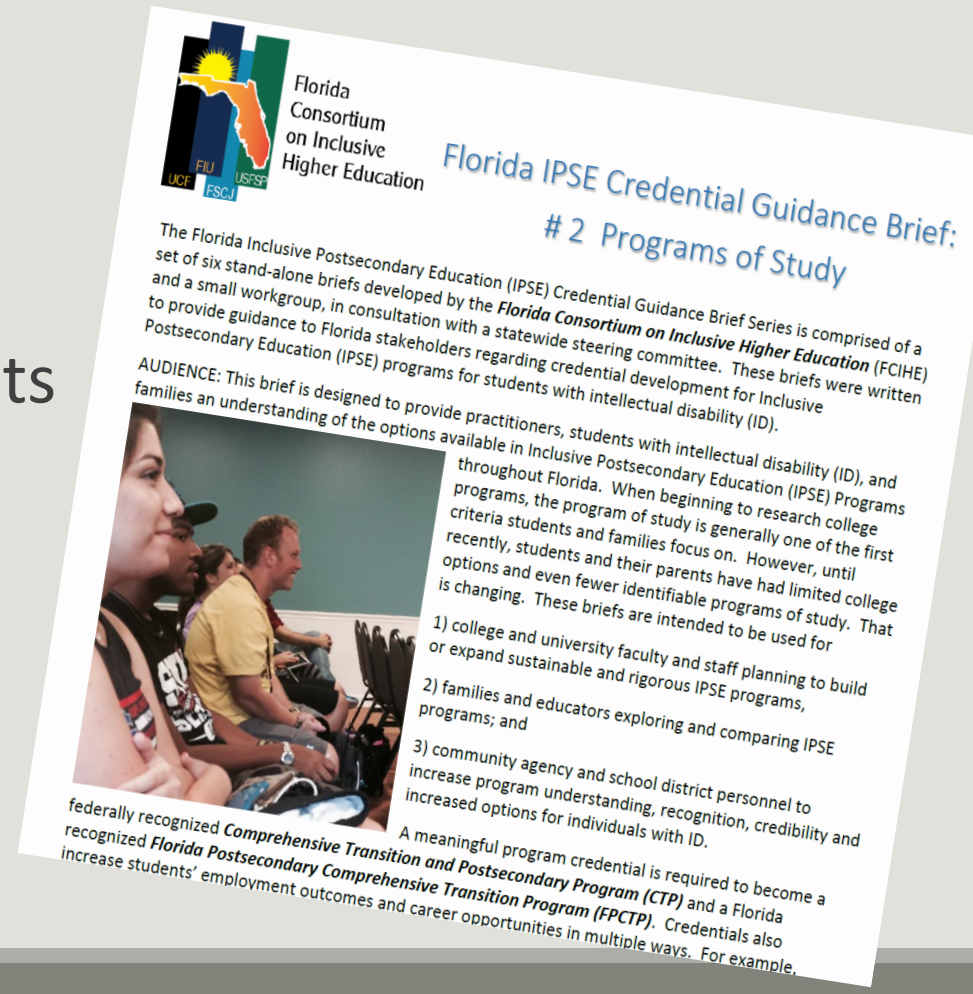




Credential Guidance Brief Series #2 Programs of Study

Program of Study Components

- Coursework Study Requirements
- Internship & Employment Requirements
- Co-curricular & Experiential Learning
- Certificates Earned



Credential Guidance Brief Series

#3 Exploring Existing Credentials



Florida
Consortium
on Inclusive
Higher Education

Florida IPSE Credential Guidance Brief: #3 Exploring Existing Credentials

The Florida Inclusive Postsecondary Education (IPSE) Credential Guidance Brief Series is comprised of a set of six stand-alone briefs developed by the **Florida Consortium on Inclusive Higher Education (FCIHE)** and a small workgroup, in consultation with a statewide steering committee. These briefs were written to provide guidance to Florida stakeholders regarding credential development for Inclusive Postsecondary Education (IPSE) programs for students with intellectual disability (ID).

AUDIENCE: These briefs are intended to be used for

- 1) college and university faculty and staff planning to build or expand sustainable and rigorous IPSE programs,
- 2) families and educators exploring and comparing IPSE programs; and
- 3) community agency and school district personnel to increase program understanding, recognition, credibility and increased options for individuals with ID.

A meaningful program credential is required to become a federally recognized **Comprehensive Transition and Postsecondary Program (CTP)** and a Florida recognized **Florida Postsecondary Comprehensive Transition Program (FPCTP)**. Credentials also increase students' employment outcomes and career opportunities in multiple ways. For example, credentials enable businesses to identify a student's expected skill sets upon program completion and to recognize credentialed applicants as qualified applicants. Credentials earned through IPSE programs or typical degree-seeking programs, *and* sponsored by the college or university, represent valid and rigorous programs of study. These Credential Guidance Briefs have a number of Florida-specific points of information as they were written for Florida, though families, program staff, and faculty

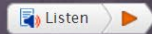
Florida's Inclusive Postsecondary Education Programs

Institution & Affiliation: Program Name	Location	Contact Information	Certifications	Age	Length	Housing
Broward College; <i>Name coming soon</i>		Craig Levins		18-22	1 Yr.	No
Cape Coral Technical College & Fort Meyers Technical College; <i>HIRE coming 2019</i>	Cape Coral Fort Meyers	Brian Mangan BrianMM@LeeSchools.net			1 Yr.	No
Florida Atlantic University: <i>Academy for Community Inclusion</i>	Jupiter & Boca Raton	Dr. Michael Brady mbrady@fau.edu	CTP/FPCTP	18+	3 Yrs.	No
Florida International University: <i>Embrace Plus</i>	Miami	Nicole Attong nattong@fiu.edu	---	18-26	2 Yrs.	Yes
Florida Keys Community College: <i>Project Access</i>	Key West	Katie Norland Katie.Norland@fkcc.edu	CTP/FPCTP	18+	1-3 Yrs.	Yes
Florida Panhandle Technical College: <i>Project Independence</i>	Chipley	Dr. Martha Compton Martha.compton@fptc.edu	CTP/FPCTP	18+	1-2 Yrs.	No
Florida State College Jacksonville: Duval & Nassau County Schools or Adults <i>Achieve/ VERTICAL Program</i>	Jacksonville	Ethel Still-Richardson still.richardson@fscj.edu	---	18+	1-2 Yrs.	No
Indian River State College: <i>STAGE Program</i>	Ft. Pierce	Marria Partee, mpartee@irsc.edu	FPCTP	18+	2 Yrs.	No
McFatter Technical College & Broward County Schools: <i>Grow Your Future</i>	Davie	Christy Bradford Christy.Bradford@browardschools.com	CTP/FPCTP	18+	1-2 Yrs.	No
Pensacola State College & Arc Gateway: <i>PALS</i>	Pensacola	Dondie Roper droper@arc-gateway.org	-	18+	2 Yrs. +	No
Robert Morgan Technical College & Miami Dade Public Schools: <i>TOPS</i>	Miami	Dr. Vivian Vieta, vvieta@dadeschools.net	CTP/FPCTP	18+	3-4 Yrs.	No
Santa Fe College: <i>Project SAINT</i>	Gainesville	Linda.Mussillo@sfcollege.edu	CTP/FPCTP	18-25	1-2 Yrs.	No
St. Petersburg College: <i>coming in 2020</i>	St. Petersburg	Dr. Misty Kemp	FPCTP			No
Southeastern University: <i>SEU Link</i>	Lakeland	Dr. David Grant, dggrant@seu.edu	CTP/FPCTP	18+	2+ Yrs.	Yes
Tallahassee Community College: <i>Eagle Connections</i>	Tallahassee	Amanda Warren, warrena@tcc.fl.edu	FPCTP	18+	2-3 Yrs.	No
University of Central Florida: <i>Inclusive Education Services</i>	Orlando	Dr. Adam Meyer, Adam.meyer@ucf.edu	CTP/FPCTP	18+	2.5 Yrs.	Yes
University of North Florida/Arc: <i>On Campus Transition</i>	Jacksonville	Bernadette Gismonde, bgismonde@arcjacksonville.org	---	18+	2/4 Yrs.	Yes

Visit us at www.FCIHE.com to learn more and find resources and links to each of Florida's Inclusive Postsecondary Education Programs.



Access to College and Careers for Students with an Intellectual Disability



This website is designed to provide information on Florida's inclusive college programs for students with intellectual disabilities. It is intended for students with an intellectual disability and their families, and postsecondary and secondary staff, teachers, and instructors.

[See All Participating Colleges](#)

SEE MORE



Latest News

FCIHE 2017 Summer Institute Registration Open: [Click here](#) for more information.

...



Online Learning Modules

Enjoy free online modules on Universal Design for Learning (UDL) in Postsecondary Education and College Advising through Person-Centered



Upcoming Events

2017 FCIHE Summer Institute
July 13, 2017

[Register for Event](#)



Mini Grant Funding



Program startup and enhancement grants will be awarded annually to institutions of higher education that align their program with HEOA's Comprehensive Transition



We Can Help

Starting inclusive postsecondary programs for students with an intellectual disability, or writing the grant for the program, can be challenging. We have the

Resources for Students, Families & Educators

 Listen 

The Florida Consortium on Inclusive Higher Education has gathered a host of resources including website links, web modules, media, program guides, and documents to assist students, their families, and secondary and postsecondary educators in learning more about, enhancing, or establishing a college program for students with an intellectual disability.

Search Resources

Search Resources

FCIHE Online Learning Modules

- Star Person-Centered Planning
- Universal Design For Learning

College Programs

- Florida IPSE Institutions
- Transition

Program Development

- Academic Support
- Advising/Planning
- Assessment
- Mentoring
- Program of Study

Independent Living

- Finances
- Health
- Housing
- Self-Determination/Self-Advocacy

Community Engagement

- Self-Advocacy
- Service Learning

Policy & Financial Aid

- CTP & FPCTP Certifications
- FAFSA & Scholarships

Career & Employment

- Assessment
- Career Exploration

Other Online Resources

- Agency for Person with Disabilities
- Florida Center for Students with Unique Abilities

Florida Consortium on Inclusive Higher Education Contact Information

Adam Meyer, Ph.D., Principal Investigator

Kathleen Becht, Ph.D., Director

Ilisa Patterson, Office Assistant: 407-823-1098

UCF: Kathleen.Becht@ucf.edu & Adam.Meyer@ucf.edu

USFSP: Danielle Roberts-Dahm, Ph.D., lroberts@usfsp.edu

Jordan Knab, Ed.S., jknab@usfsp.edu

FIU: Nicole Attong, NAttong@fiu.edu

FSCJ: Ethel Still-Richardson, still.richardson@fscj.edu

Explore: www.FCIHE.com

Contact us: FCIHE@UCF.edu

Additional Resources: FCSUA.com - ThinkCollege.net

